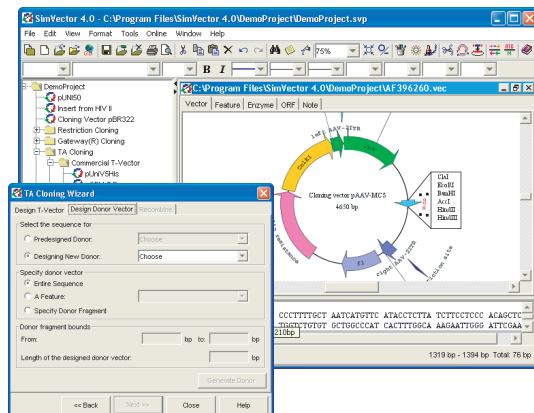


# SimVector

An exceptional tool for drawing publication and vector catalog quality maps and designing cloning experiments

## Exceptional Publication Quality Plasmid Maps

Whether you are a catalog company selling engineered plasmids or conducting restriction or recombinant cloning experiments, SimVector will help you simulate the experiments and create publication quality maps from start to finish. Use it to draw circular and linear vector maps in a variety of colors, patterns, fonts and line types. Display enzyme names in two font styles with the bacterium portion in Italics as is traditional. Use even more than one font style and color in a



Transform GenBank annotations into graphical maps

Choose from hundreds of fonts, colors, styles and fill patterns for enzymes and features to draw circular or linear vector maps with a click of a button

Choose more than one font in a single textual word when displaying enzymes or annotations

Display MCS's by listing the enzymes that cut only within the MCS in the bracket view

Draw vector maps with or without knowing the vector sequence

Use the powerful notes facility for storing and printing reference material

Define your own custom color theme and apply it repeatedly

Generate images in vector graphic format for Adobe Illustrator 10 and MS PowerPoint 2003

Export high resolution images in JPEG, PNG and TIFF format for easy addition to web sites, or export images as ready-to-host pages

Simulate cloning experiments to save time and laboratory resources.

Quickly and easily place inserts in vectors by simple cut and paste commands.

Search for ORFs in all possible reading frames

Translate sequences for simulating expressed proteins to check possible reading frame errors

Add text to annotate the map

Print the vector map, the sequence, the detailed analysis results, and your notes

Use over a 1000 restriction enzymes or 24 commercial enzyme sets provided, or create your own set for repeated analysis

Select restriction enzymes by overhang, recognition site length, and other properties

Available for both Windows and Mac

The map displayed above is the pAAV-MCS Cloning vector by Stratagene drawn using SimVector 4.00

single textual word anywhere in the map including in the feature annotations. Export plasmid maps in EPS format for Adobe Illustrator 10, SVG for Microsoft Power Point 2002 or as ready-to-host web pages. Choose JPEG, TIFF and PNG formats for export.

## Multiple Cloning Site (MCS) Display is Unique to SimVector

Vector catalogs generally display MCS's in a unique format, with enzymes one above the other in a vertical list. SimVector identifies the MCS's by interpreting GenBank header annotations or you can specify them manually. It then draws them in this special format we call the "Bracket View". It even has the smarts to list only the enzymes that cut within the MCS and nowhere else.

## Lightning Fast Cloning Simulation

SimVector transforms annotations in sequence headers from GenBank or local files into fully illustrated maps. The cloning wizard steps you through popular recombinant protocols such as Gateway® and TA, as well as single or two enzyme restriction cloning. ORF search helps you ensure that the construct remains in-frame. With a click of a button, you can translate sequences of expressed proteins to check for possible reading frame errors. With SimVector, cloning simulation is as simple as clicking a few buttons.

## Restriction Enzyme Analysis

SimVector has a comprehensive restriction enzyme analysis facility. Choose from a database of more than a thousand restriction enzymes or use a popular commercial enzyme set we have preloaded. You can even design your own custom enzyme sets.

## Biologist-designed Intuitive Interface

SimVector has an intuitive biologist-designed interface for cloning simulation and sequence analysis. Point-and-click wizards make it easy to use even for beginners, while versatile functionality offers full control for experts.

### Activate the program following these steps:

- Install the SimVector demo from the CD
- Launch the program
- Click **Evaluate** on the first window that opens
- Request an evaluation key from us
- The demo will transform to a fully functional product

### Learn to use SimVector

- SimVector Multimedia Tutorial is included on the CD

### Order on-line

- [www.PremierBiosoft.com](http://www.PremierBiosoft.com)
- E-mail: [sales@PremierBiosoft.com](mailto:sales@PremierBiosoft.com)
- Phone: 650-856-2703, Fax: 650-618-1773

## Other bioinformatics tools from Premier Biosoft International

AlleleID Array Designer Beacon Designer Primer Premier SimGlycan TMA Foresight Xpression Primer

**PREMIER Biosoft International:** Visit us at [www.PremierBiosoft.com](http://www.PremierBiosoft.com)

3786 Corina Way, Palo Alto, CA 94303-4504 Ph: 650-856-2703, E-mail: [support@PremierBiosoft.com](mailto:support@PremierBiosoft.com), Fax: 650-618-1773